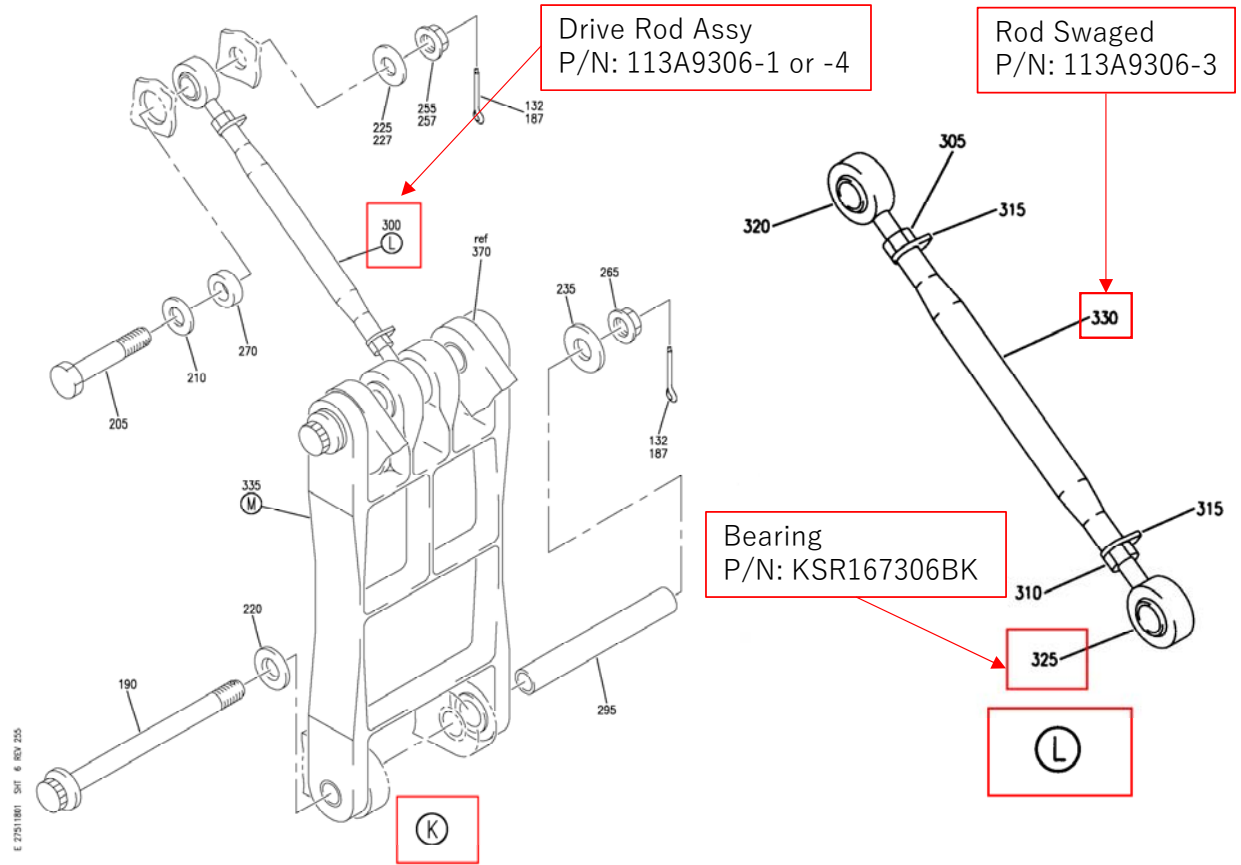


E 27511801 SHF 1 REV 247



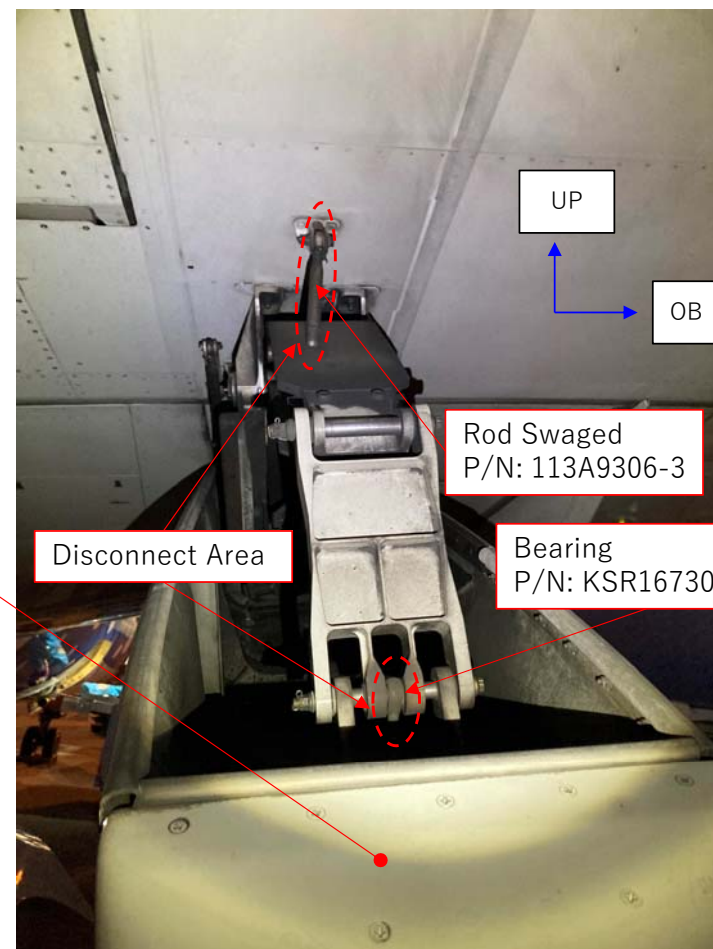
E 27511801 SHF 6 REV 255

Ref. IPC 27-51-18-01

Figure 1 - JA05RK_Worn Damage – Lower Bearing Thread of No.6 Flap Track Fairing Drive Rod



No.6 Flap Track Fairing



Disconnect Area

Rod Swaged
P/N: 113A9306-3

Bearing
P/N: KSR167306BK

We found hanging down condition of No.6 flap track fairing with the Flap in the Up position.

Figure 1 - JA05RK_Worn Damage – Lower Bearing Thread of No.6 Flap Track Fairing Drive Rod



Bearing
P/N: KSR167306BK

Worn Damage Area

Figure 1 - JA05RK_Worn Damage – Lower Bearing Thread of No.6 Flap Track Fairing Drive Rod

During our 737-800 fleet inspection of JA03RK, the locknut(P/N: NAS509L6C or BACN11U6CM1L) loose condition of drive rod assy was found in No. 6 flap track fairing.

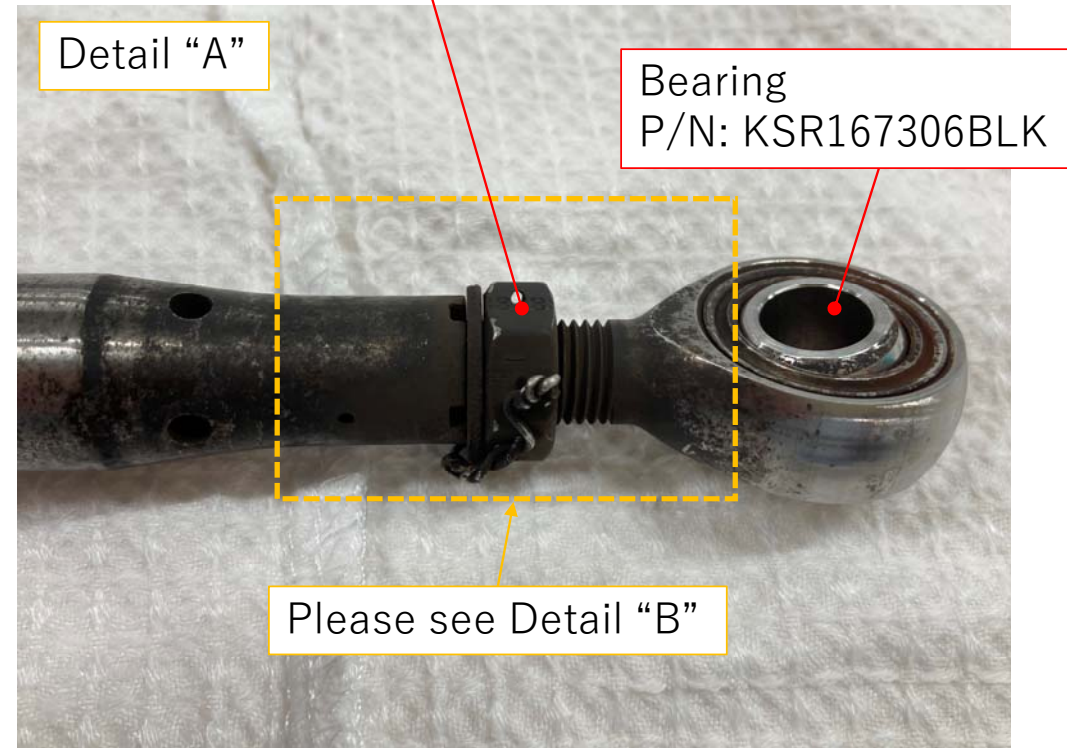
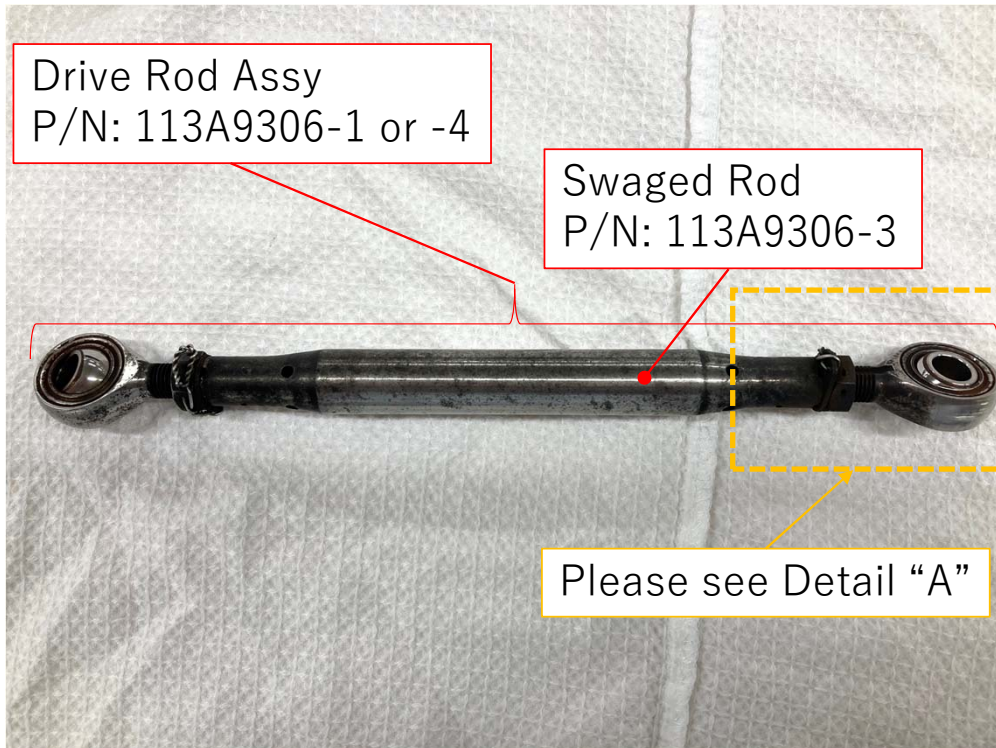


Figure 2 - Locknut Loose Condition of No.6 Flap Track Fairing on JA03RK

Detail "B"

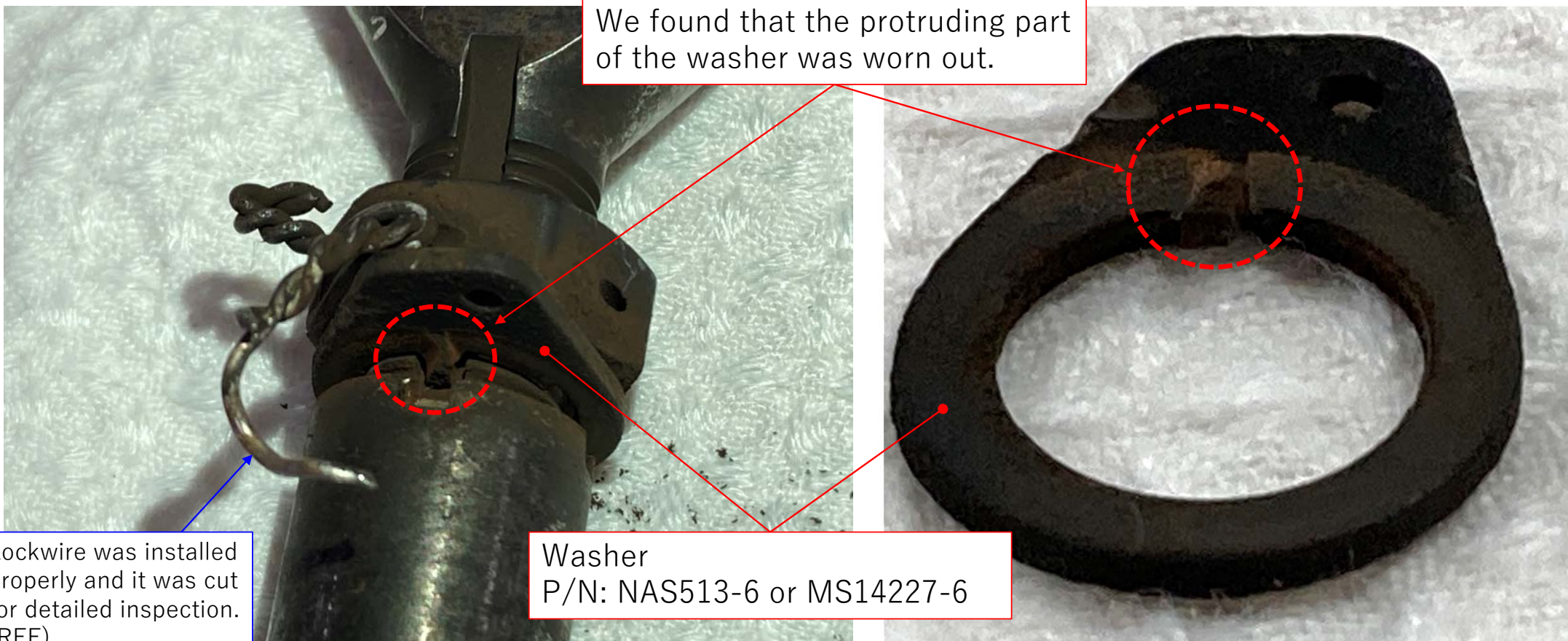


Figure 2 - Locknut Loose Condition of No.6 Flap Track Fairing on JA03RK