

[Details of the window]

P/N: 141A4800-2

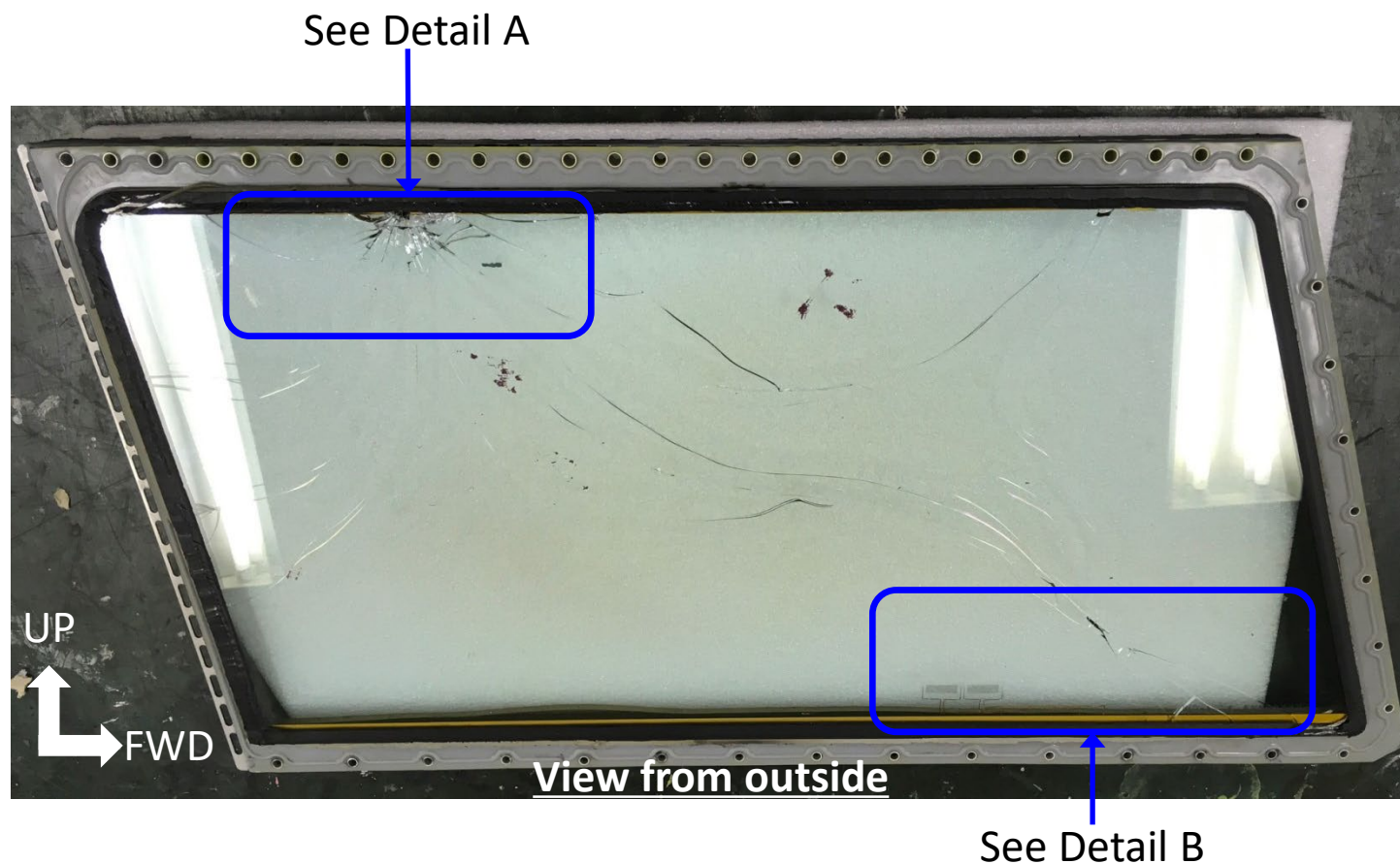
S/N : 10260H1443

TTL Flight Hours : 21,606

TTL Flight Cycles : 15,780

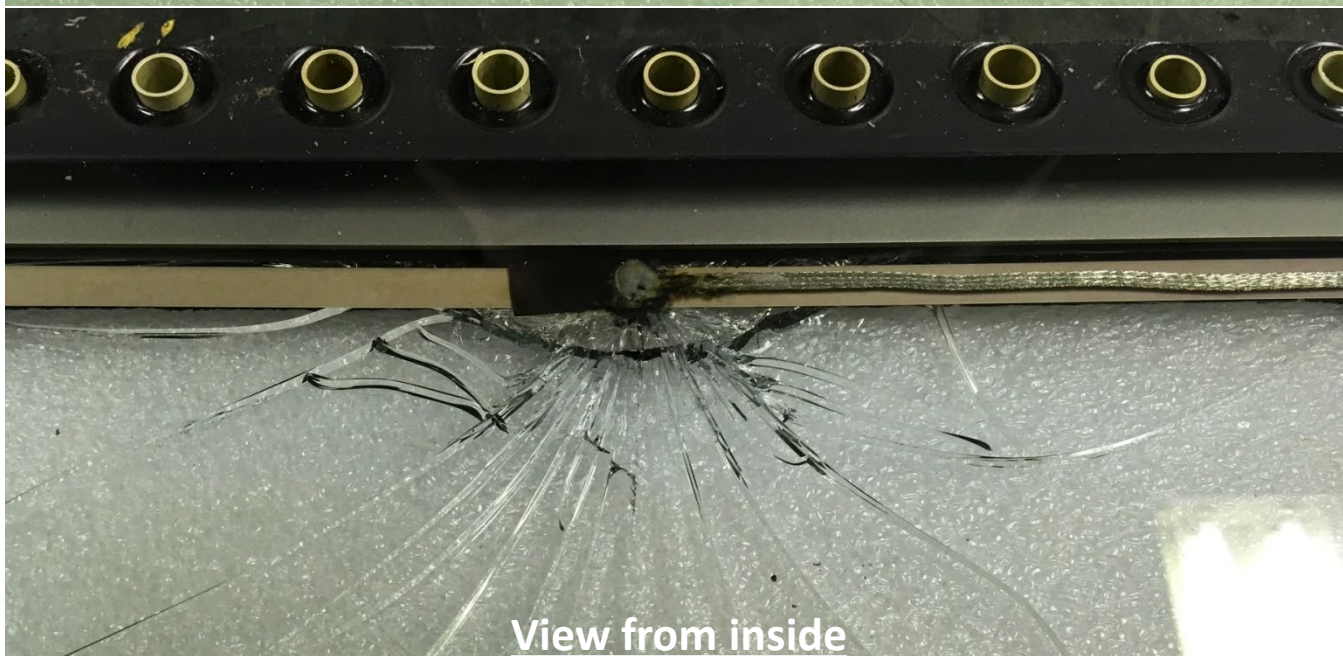
Removal Date : Dec 24, 2018

*NOTE : Installed on L/N 3501 from its delivery.





View from outside



View from inside

Detail A



View from inside

No damage was found on the Braid wire, Solder joint and Sensors line on lower side Bas bar.

Detail B